

Rugged DVR+ Overlay Laptop

Powered by Rayfin Single Channel Inspection (SCI)



This portable, durable, and efficient DVR laptop solution is tailored for live offshore inspections. Harness seamless recording, data logging, and eventing capabilities with real-time topside media and data transfer. Compatible with IP cameras, this DVR seamlessly integrates into existing workflows and eliminates the need for post-mission downloading.

The intuitive setup and user-friendly interface allows for quick deployment and operation, reducing training time and increasing productivity.



Key Features:



Universal Compatibility: Works with IP cameras, ensuring compatibility and flexibility in equipment setups.



Comprehensive Data Logging: Automatically log all incoming data with date and time stamping, GPS, and sensor information, and embed EXIF data within images.



Customizable File Structure: Organized access to images, videos, and data, customizable file organization. Survey data is stored to your external hard drive.



Enhanced Survey Findings: Overlays and voice-over annotations on live and recorded videos, and digital stills.



User-Friendly: An intuitive setup and straightforward interface ensures you are fully operational within an hour, making it accessible even for those with minimal technical experience.



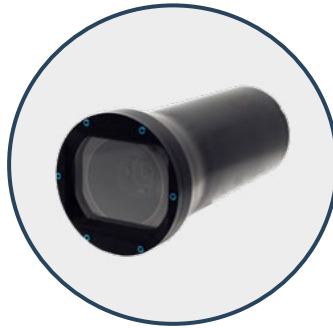
Optional Real-Time Streaming: Add on access to secure ship-to-shore streaming of video, audio, and data with internet connection.

Level Up Your DVR with Rayfin Camera Integration

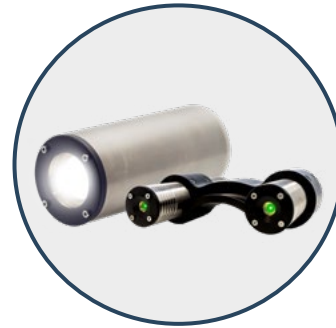
Maximize the potential of your Rugged DVR+ Overlay SCI by pairing it with a SubC Imaging Rayfin camera. Access integrated camera, LED, and laser control and 12.3M still images and HD/4k video. Plus, unlock Rayfin Rapid Digital Imaging (RDI) with an adjustable capture rate up to 2Hz. With Rayfin RDI you can capture a series of high-resolution digital stills that can be zoomed in on to inspect the smallest detail or combined for a complete picture of the object being inspected.



DVR+O SCI Inspection Software



Rayfin Camera



Lights & Lasers

	Technical Specifications
Camera Compatibility	Any IP Camera
Video Quality	SD, HD, 4K
Storage Space	512GB capable of storing up to 130,000 images and 18 days of HD video
Compatible Inspection Management Software	Aize Coabis Aize Integrity Elements Woods Nexus BIIGLE
Integration Capabilities	Open API for integration into custom workflows and third-party systems
Durability	Semi-rugged, MIL-STD-810H and IP53 certified
Display	14 in. FHD (768p), FHD 1,000 nit touch model
Ports & Expansion	USB-A x 2, Thunderbolt™ 4 USB-C, MicroSDXC, HDMI, Ethernet , Audio In/Out, Dual SIM (4FF, eSIM), Docking Connector
Wireless	Wi-Fi 6E, Bluetooth®
Weight	4.9 lbs. (Touch FHD model)
Power	10 hours – MobileMark 25
Processor RAM	i7-1370P 32 GB with Iris Xe Graphics

Specifications subject to change without notice. © 2010 SubC Control Ltd. All rights reserved. Rev. December 2024



SubC is here to help you plan your next project.

Our equipment is available for direct purchase or rental.
To speak with an expert or schedule a demo please [contact us](#).

team@subcimaging.com | subcimaging.com | +1-709-702-0395