

DVR+

Built for Today's Inspections. Ready for What's Next.



Live Event Tagging | Post-Dive Review | Report-Ready Export

DVR+ connects live operations to reporting deliverables in one eventing workflow. Tag events in real time with timestamps linked to the footage, then validate and enrich the log post-dive before exporting structured event logs. Save hours of manual work, reduce the risk of missed anomalies, and deliver cleaner, more consistent reports.



Multi-Camera Recording & Blackbox

Record up to 6 simultaneous video feeds with synchronized audio. A built-in blackbox mode continuously backs up footage for added reliability.

Synchronized Overlays, Annotations, & Logging

Overlay GPS, depth, and sensor data in real time. Configure project-specific overlays and automatically log sensor inputs alongside video.

Core Capabilities

- ▶ Up to 6 simultaneous video feeds, with blackbox background recording
- ▶ Real-time overlays and annotations for GPS, depth, sensor data, and logos
- ▶ Live event tagging with timestamped, structured metadata
- ▶ Offline editor for post-dive review, validation, enrichment, and QA
- ▶ Custom event log export for client-ready reporting
- ▶ Deploy your way: software-only, rackmount, rugged laptop, virtual machine
- ▶ Integrations with Aize, WOOD NEXUS, Coabis, Orphie, and more
- ▶ RTSP LAN streaming, with optional offshore streaming and remote control

Live Eventing & Post-Dive Review

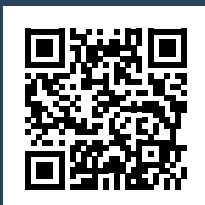
Tag events in real time to capture key moments with timestamps directly linked to the recorded footage. After the dive, our offline editor, ReviewStudio, supports faster cleanup, enrichment, and QA. Export custom structured event logs for client deliverables.

Remote Operation & Streaming

Add the option to stream live video and support onshore visibility during operations. Enables real-time decision-making and can reduce offshore crew requirements.

Proven Offshore Reliability & Support

Fast setup, intuitive interface, and proven reliability in demanding offshore conditions. Backed by responsive support when and where you need it.

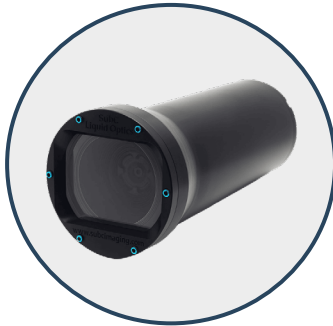


Level Up Your DVR with Rayfin Camera Integration

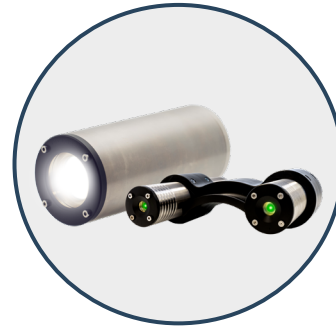
Maximize the potential of your DVR+ by pairing it with a SubC Imaging Rayfin camera. Get integrated camera, LED, and laser control plus 12.3MP still images and HD/4K video. Plus, unlock Rayfin Rapid Digital Imaging (RDI) with an adjustable capture rate up to 2Hz to high-resolution still sequences to zoom in on fine detail or stitch together for a complete view.



DVR+ Software



Rayfin Cameras



Lights & Lasers

	Technical Specifications
Camera Compatibility	IP, Composite, HD-SDI
Max. Camera Channels	Up to 6
Supported Resolutions	SD, HD, FHD, 4K
Recording Format	MPEG4, H.264, H.265
Audio Input	Headset or USB mic
Real-Time Streaming	Cloud, Edge
Data Input	Serial, UDP, TCP
Video Output	SDI, HDMI, RTSP LAN
Remote Access	LAN/VPN over Ethernet
Data Sync & File Structure	Integrated for easy export & client handoff
Compatible Inspection Management Software	Aize Coabis, Aize Integrity Elements, WOOD NEXUS, BIIGLE
API Integration	Open API for integration into custom workflows & third-party systems
Eventing & Post-Dive Review	Live event tagging with timestamped logs linked to recorded footage, plus post-dive review, QA, and validation via offline editor, ReviewStudio
Event Log Export	Excel event logs for report-ready workflows (Word / PDF)

	Configuration Specific Details
Software Only Minimum Specs	Operating System: Windows 10 or 11 Pro
	RAM: 16GB minimum
	Storage: SSD recommended (varies by recording)
	12th Gen Intel Core i7 or newer
Rackmount	3U, 19" standard rack, SSD OS drive, backup-capable
Laptop	Ruggedized, includes SSD, HDMI, Ethernet, USB ports (see full specs here)

Specifications subject to change without notice © 2010 SubC Control Ltd. All rights reserved. Rev. May 2025



Photo Captured on SubC Rayfin Camera

Our equipment is available for direct purchase or rental. To speak with an expert or schedule a demo please [contact us](#).

subcimaging.com | 1-709-702-0395 | team@subcimaging.com