

DVR+ Overlay

Built for Today's Inspections. Ready for What's Next.



Works with Any Camera | Synchronized Data Capture | Easy Set Up & Use

A flexible, field-proven system for recording & managing high-quality subsea inspection data. DVR+ Overlay combines recording of up to 6 cameras, metadata overlay, plus optional real-time streaming in one easy-to-use platform. It integrates into existing workflows & is available as a rackmount unit, rugged laptop, or software-only solution, and is ideal for offshore operations & onshore-managed inspections.



Multi-Camera Recording & Blackbox

Record up to six simultaneous video feeds with synchronized audio & metadata. A built-in blackbox mode continuously backs up footage for added reliability.

Configurable Overlays & Logging

Overlay GPS, depth, & sensor data in real time. Configure project-specific overlays & automatically log metadata—including audio annotations.

Works with Any Camera

Supports IP, composite, & HD-SDI cameras, including STR Seavision. Enhanced features are available with Rayfin cameras, along with plug-in integration with Orphie.

Remote Operation & Streaming

Add the option to stream live video & control inspections from onshore. Enables real-time decision-making & reduced crew size offshore.

Fast Deployment with Flexible Integration

Deploy as a full system or install the software on your infrastructure. Integrates with platforms like WOOD NEXUS, AIZE, & Coabis—no custom build required.

Field-Ready Performance & Support

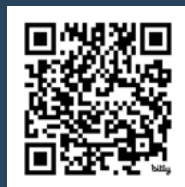
Fast setup, intuitive interface, and proven reliability in demanding offshore conditions, backed by responsive support when and where you need it.

Core Capabilities

- ▶ Compatible with IP, HD-SDI & composite cameras
- ▶ Supports up to 6 simultaneous video feeds
- ▶ Real-time overlay of transparent logo, GPS, depth & sensor data
- ▶ Blackbox background recording
- ▶ Software-only, rackmount, or rugged laptop deployment
- ▶ Integration with AIZE, WOOD NEXUS, Coabis, etc.
- ▶ Advanced features for Rayfin cameras
- ▶ Plug-in support for Orphie
- ▶ Intuitive user-interface and setup in under 1 hour
- ▶ Virtual machine compatible
- ▶ RTSP LAN video streaming
- ▶ Real-time offshore streaming & remote control (optional)

Coming Soon

- ▶ Event tagging & logging
- ▶ Cloud storage integration
- ▶ Archiving & playback

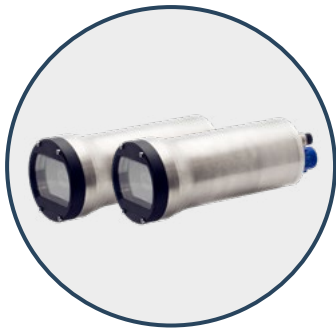


Level Up Your DVR with Rayfin Camera Integration

Maximize the potential of your DVR+ Overlay by pairing it with a SubC Imaging Rayfin camera. Access integrated camera, LED, and laser control and 12.3M still images and HD/4k video. Plus, unlock Rayfin Rapid Digital Imaging (RDI) with an adjustable capture rate up to 2Hz. With Rayfin RDI you can capture a series of high-resolution digital stills that can be zoomed in on to inspect the smallest detail or combined for a complete picture of the object being inspected.



DVR+ Overlay Software



Rayfin Cameras



Lights & Lasers

	Technical Specifications
Camera Compatibility	IP, Composite, HD-SDI
Max. Camera Channels	Up to 6
Supported Resolutions	SD, HD, FHD, 4K
Recording Format	MPEG4, H.264, H.265
Audio Input	Headset or USB mic
Real-Time Streaming	Cloud, Edge
Data Input	Serial, UDP, TCP
Video Output	SDI, HDMI, RTSP LAN
Remote Access	LAN/VPN over Ethernet
Data Sync & File Structure	Integrated for easy export & client handoff
Compatible Inspection Management Software	Aize Coabis, Aize Integrity Elements, WOOD NEXUS, BIIGLE
API Integration	Open API for integration into custom workflows & third-party systems

	Configuration Specific Details
Software Only Minimum Specs	Operating System: Windows 10 or 11 Pro
	RAM: 16GB minimum
	Storage: SSD recommended (varies by recording)
	12th Gen Intel Core i7 or newer
Rackmount	3U, 19" standard rack, SSD OS drive, backup-capable
Laptop	Ruggedized, includes SSD, HDMI, Ethernet, USB ports (see full specs here)

Specifications subject to change without notice. © 2010 SubC Control Ltd. All rights reserved. Rev. May 2025

Our equipment is available for direct purchase or rental.
To speak with an expert or schedule a demo please [contact us](#).