

## STR SEASONIC ROV SYSTEM



The STR SeaSonic Acoustic Flooded Member Detection System is a bespoke development providing the optimal accuracy and reliability attainable for acoustic flooded member detection. The system draws from experiences gained with the field proven STR SeaGamma FMD system. Unlike the STR SeaGamma system the STR SeaSonic system does not require the use of ionising radiation, this aids safety and transportation.

The system is typically ROV manipulator mounted, utilising the STR designed mounting and alignment tools. This arrangement may also be supplemented with video camera recording and laser guided alignment.

The STR SeaSonic is particularly well suited for use on very large member sizes not supported by gamma radiation systems. It is equally well suited to inaccessible or very small members where gamma based systems have restricted access.

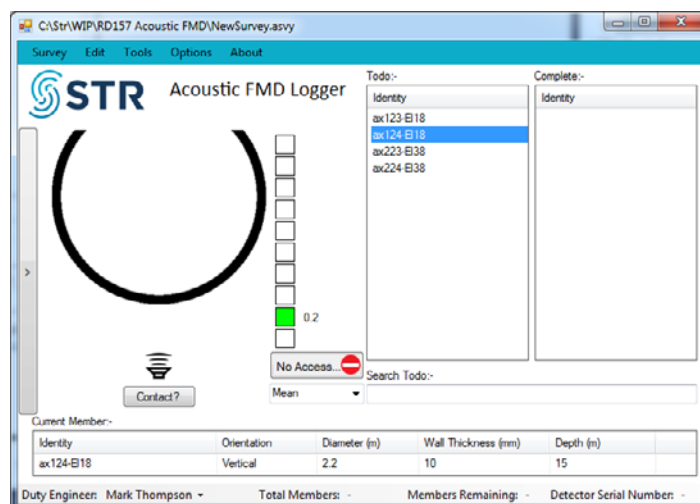
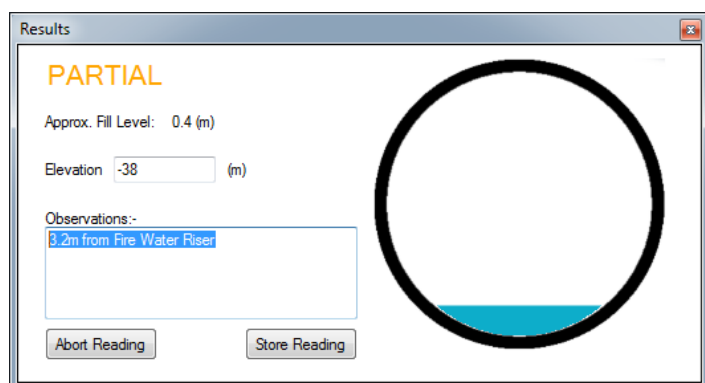
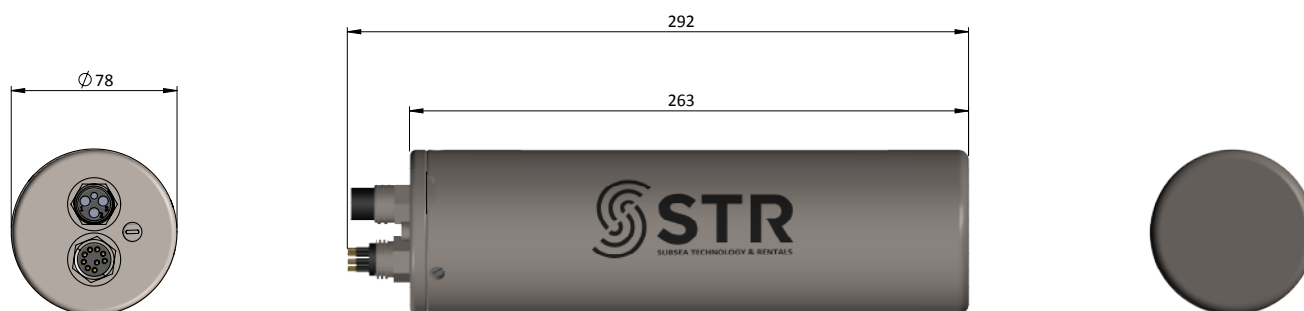
Much like the STR SeaGamma, the STR SeaSonic system is provided with highly comprehensive software allowing job planning, data acquisition, display, recording and report generation. The reports generated can be easily compiled along with SeaGamma reports should both systems be used during the inspection campaign.

### KEY FEATURES

- No ionising radiation source required
- Flooded member diameters 0.15-10m
- Wall thicknesses 1mm upwards
- Separate compact transducer head
- Robust & versatile transducer mounting & protection
- Intuitive easy to use Graphical User Interface
- RS232 & RS485 Communication Interface
- Low Power DC Input (<4W @ 18-56V)
- High resolution acoustic TX/RX
- 3000m Depth Rating

# STR SEASONIC ROV SYSTEM

| STR SEASONIC ACOUSTIC FMD (AFMD-3000T) |   |
|--|---|
| DETECTOR TYPE                          | Pulsed Ultrasonic Acoustic Transceiver  |
| FREQUENCY                              | 1.125MHz  |
| RESOLUTION                             | Auto / user selectable pulse length <1mm+   |
| BEAM WIDTH                             | Conical 3° Approx.  |
| INPUT SUPPLY VOLTAGE                   | 18 to 56V DC  |
| INPUT SUPPLY POWER                     | 4W Typical  |
| COMMUNICATIONS                         | Opto-Isolated RS232 & RS485   |
| DEPTH RATING                           | 3000m operational   |
| OPERATING TEMPERATURE                  | 0°C to 45°C   |
| HOUSING MATERIAL                       | Titanium  |
| CONNECTOR                              | ROV/Diver Interface: MCBH8MTi / MCIL8F mating half<br>Transducer: MCBH3FTi / MCIL3M mating half   |
| DIMENSIONS (mm)                        | Electronics Housing: 263 L x 78 D (plus connectors)<br>Transducer: 60 L x 40 D @ head   |
| WEIGHT (kg)                            | Electronics Housing: 2.5kg in air / 1.25kg in water<br>Workclass tool = Total = 5.65kg in air / 4.85kg in water<br>Lightweight tool = 2.00kg in air and 1.36kg in water.  |
| CIRCUIT PROTECTION                     | Reverse polarity protection, under-voltage lockout, over-voltage protection, self-resettable thermal fusing on all inputs/outputs. Internal fault monitoring, temperature and voltage reporting to user software. |



All information contained in this brochure may be subject to change without prior notice.

[WWW.STR-SUBSEA.COM](http://WWW.STR-SUBSEA.COM)