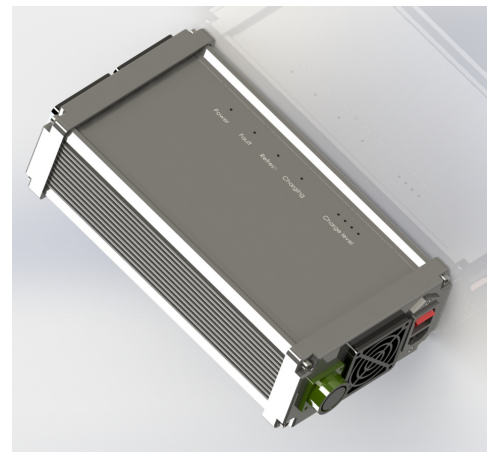




SEACELL INTELLIGENT SUBSEA BATTERY PACK

STR subsea rechargeable battery pack incorporating: over current protection, internal voltage and temperature monitoring, over discharge protection, automatic pressure relief and stainless steel or anodised aluminium housing options.



SEACHARGE BATTERY CHARGER

KEY FEATURES

- 36Ah, 26.4V NiMH rechargeable subsea battery pack
- Automatic charge and over-discharge management
- Battery over/under temperature monitoring/protection
- Output over-current protection
- 1000m & 3000m options
- Hard Anodised Aluminium housing
- Automatic Pressure Vent
- Subsea bottle dimensions: 468mm L, 167mm Diam.
- Weight: 21kg in Air (1000m option)
17.9kg in Water (1000m option)

SEACELL INTELLIGENT SUBSEA BATTERY PACK

BATTERY PACK

Chemistry: Nickel metal hydride
Output Voltage: 26.4V Nominal
Capacity: 38Ah
Material: Stainless Steel or
Hard Anodised Aluminium
Connector: Subconn FCR2012F
Depth Rating: 3000m or 1000m
Dimensions: Height 465mm
Diameter 180mm

CHARGER

Features: Intelligent charge and cell conditioning
Performance & fault detection reporting
Input Voltage: 85-264V AC
Material: Black anodised aluminium
Dimensions: Height 90mm
Width 163mm
Length 304mm